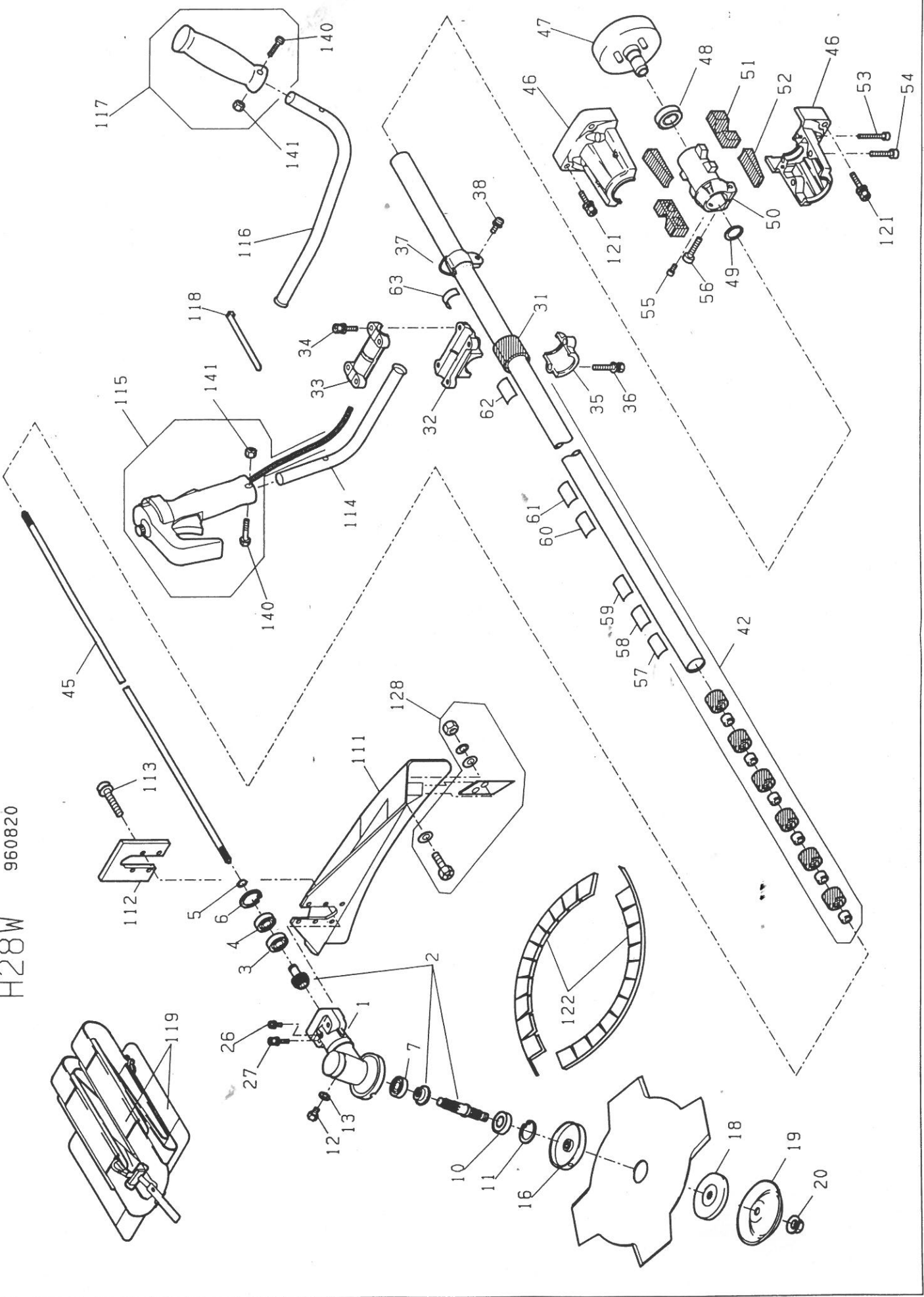


H28W 960820



[H28W PARTS PRICE LIST 1/2]

NO.	CODE NO.	NAME	QTY	F.O.B. YEN	MODEL
1-27	○ 166-694-7	1682745 GEAR CASE ASS'Y	1		H28W
1	○ 166-691-1	GEAR CASE	1		H28W
2	166-712-1	GEAR ASS'Y	1		H28W
3	004-513-0	PINION BEARING	1		H28W
4	004-551-0	PINION BEARING	1		H28W
5	008-203-0	STOP RING	1		H28W
6	008-317-0	STOP RING	1		H28W
7	004-502-0	GEAR BEARING	1		H28W
10	004-703-0	SHAFT BEARING	1		H28W
11	008-319-0	STOP RING	1		H28W
12	001-100-0	OIL HOLE BOLT	1		H28W
13	166-475-4	OIL HOLE PACKING	1		H28W
16	166-691-5	1664003 HOLDER CUTTER	1		H28W
18	166-691-6	CAP CUTTER	1		H28W
19	165-095-7	STABILIZER	1		H28W
20	166-691-9	BLADE NUT W/WASHER M10(L)	1		H28W
26	002-421-0	SCREW (M5 X 10)	1		H28W
27	001-813-0	BOLT (M6 X 35)	2		H28W
31	204-103-0	HANDLE DAMPER	1		H28W
32	166-543-1	HANDLE HOLDER	1		H28W
33	166-542-9	HANDLE HOLDER	1		H28W
34	001-812-0	BOLT (M6 X 30)	4		H28W
35	166-543-3	HANDLE HOLDER	1		H28W
36	001-812-0	BOLT (M6 X 30)	2		H28W
37	201-107-3	HANGER STRAP STEM	1		H28W
38	002-826-0	SCREW (M5 X 16)	1		H28W
42	166-712-7	DRIVE SHAFT HOUSING ASS'Y	1		H28W
45	166-694-2	DRIVE SHAFT	1		H28W
46-56	166-711-2	CLUTCH HOUSING ASS'Y	1		H28W
46	166-710-8	CLUTCH HOUSING	1		H28W
47	203-100-0	CLUTCH DRUM	1		H28W
48	004-601-0	CLUTCH BEARING	1		H28W
49	008-061-0	STOP RING	1		H28W
50	166-694-9	CLUTCH HOUSING CORE	1		H28W
51	165-213-2	HOUSING DAMPER	2		H28W
52	165-225-8	HOUSING DAMPER	2		H28W

[H28W PARTS PRICE LIST 2/2]

NO.	CODE NO.	NAME	QTY	F.O.B.	YEN	MODEL
53	165-214-2	HEX. SOCKET HEAD BOLT M5X30	2			H28W
54	165-214-1	HEX. SOCKET HEAD BOLT M6X25	2			H28W
55	001-718-0	BOLT (M5 X 12)	1			H28W
56	001-812-0	BOLT (M6 X 30)	1			H28W
57	165-577-0	LABEL	1			H28W
58	333-301-5	LABEL	1			H28W
59	165-576-6	LABEL	1			H28W
60	165-576-8	LABEL	1			H28W
61	165-576-9	LABEL	1			H28W
63	165-577-2	LABEL	3			H28W
111	166-711-7	1656239 SAFETY GUARD	1			H28W
112	166-637-8	SAFETY GUARD HOLDER	1			H28W
113	002-826-0	SCREW (M5 X 16)	4			H28W
114	166-579-1	HANDLE	1			H28W
115	165-582-0	THROTTLE LEVER ASS'Y (W)	1			H28W
116	166-578-9	HANDLE	1			H28W
117	165-582-5	HANDLE GRIP ASS'Y	1			H28W
118	008-036-0	BAND	2			H28W
119	166-718-7	HARNESS ASS'Y	1			H28W
121	001-812-0	BOLT (M6X30)	4			H28W
122	166-695-3	PROTECTOR	2			H28W
123	165-410-4	WRENCH	1			H28W
124	165-410-3	SPANNER (10 X 8)	1			H28W
128	166-588-0	BLADE ASS'Y	1			H28W
140	165-577-5	SCREW (M5 X 30)	2			H28W
141	003-008-0	NUT (M5)	2			H28W